



ONBOARDING TOOLKIT *2025*

Contents

EDEN Overview	3
Membership	4
Leadership Structure	5
Supporting EDEN	6
Delegate Benefits	7
Getting Involved	8
How EDEN Communicates	9
Checklist for New Delegates	10
Contact	11

EDEN OVERVIEW



Welcome

We are thrilled to welcome you to the Extension Disaster Education Network (EDEN), a nationwide network of Extension professionals dedicated to reducing the impact of disasters by ensuring research-based resources are readily available to the Cooperative Extension System, stakeholders, and communities. Your involvement is crucial to our mission of strengthening community resilience across the nation.

What is EDEN?

EDEN reduces the impact of disasters by bringing together and coordinating the expertise and resources of the Cooperative Extension System to address the critical needs of individuals, families, and communities. EDEN is supported by the USDA-National Institute of Food and Agriculture (NIFA) through a Food and Agricultural Defense Initiative (FADI) grant and works in alignment with the Extension Committee on Organization and Policy (ECOP). Our network comprises a collaboration of Land-grant Universities (1862, 1890, and 1994), Sea Grant institutions, and dedicated partners.

Mission

The mission of EDEN is to reduce the impact of disasters through the aggregation of research-based resources and coordination to ensure these resources are readily available to the Cooperative Extension System, stakeholders and the communities they serve. This mission is carried out through the achievement of our **four strategic goals**:

1

Enhance the abilities of individuals, families, organizations, agencies, and businesses to prepare for, prevent, mitigate, and recover from disasters.

2

Serve as a national source for research-based disaster education.

3

Strengthen Extension's capacity and commitment to address disaster issues.

4

Strengthen EDEN's capacity to provide research-based disaster education.

MEMBERSHIP



Member Institutions

EDEN membership is held at the institutional level, which includes Land-grant Extension services (1862, 1890, and 1994 institutions and Hispanic serving institutions) and national programs such as the NOAA Sea Grant Program. An institution or national program becomes a member when their director or administrator submits an EDEN Cooperative Agreement (ECA) and appoints a point of contact. The ECA states that the institution or program will share its disaster resources with other member institutions and support participation of the point of contact and delegates at the EDEN annual conference.

Points of Contact (POCs):

Designated individuals at each member institution who serve as the primary conduits of information in the network. There is typically one POC per member institution. POCs are the voting representatives of EDEN.

Delegates:

Extension professionals from member institutions actively engaged in disaster education, encouraged to serve as committee members and perform other organizational functions of EDEN.

Retirees:

A retiree from a member institution may become a retiree delegate with the approval of the EDEN executive committee, provided they were a delegate prior to retiring. Retirees are encouraged to serve on committees and participate in organizational functions of EDEN, but may not serve as committee chairs or elected officers and do not have voting rights.

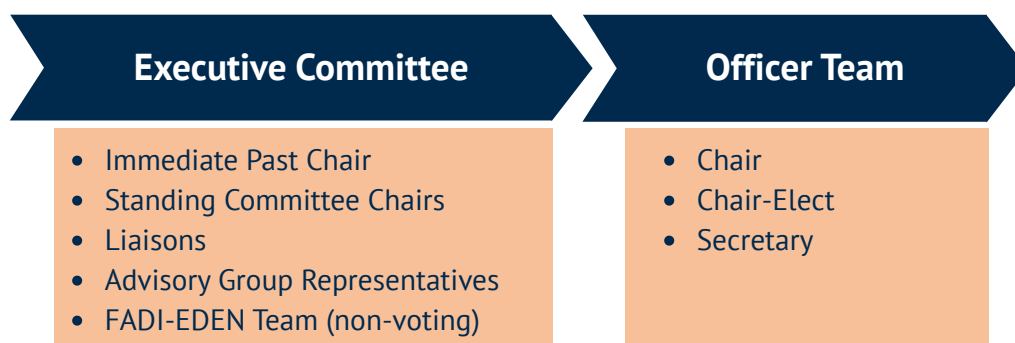
Affiliates:

Affiliate membership is open to any individual, organization, institution or agency that is not from an EDEN institutional member. Affiliate delegates are encouraged to serve on committees and participate in organizational functions of EDEN, but are not able to serve as committee chairs or elected officers, and are not eligible to vote on official EDEN business.

LEADERSHIP STRUCTURE



EDEN operates through a network of dedicated individuals and committees, guided by an Executive Committee and supported by the Food and Agricultural Defense Initiative (FADI-EDEN) team.



Standing Committees:

Programmatic:

- Agriculture
- Natural Resources
- Community and Economic Development
- Family and Consumer Science
- 4-H & Youth Development

Functional:

- Exercise & Training for Disaster Resilience
- Marketing and Membership
- Professional Development
- Annual Conference

Nominating Committee:

- Chaired by the immediate past chair (appointed by the chair in even-numbered years)
- Presents candidates for chair-elect and secretary to be voted on per voting requirements

Appointed Liaisons:

- Extension Committee on Organization and Policy (ECOP)
- USDA National Institute of Food and Agriculture (NIFA)
- National Sea Grant College Program

1890 & 1994 Advisory Groups:

- Bring together Extension professionals from the 1890 and 1994 Land-grant Universities to strengthen disaster education

Task Forces:

- The chair and executive committee may establish task forces for particular functions and needs
- Serve at the pleasure of the executive committee or until mission is completed.







FADI-EDEN Team:

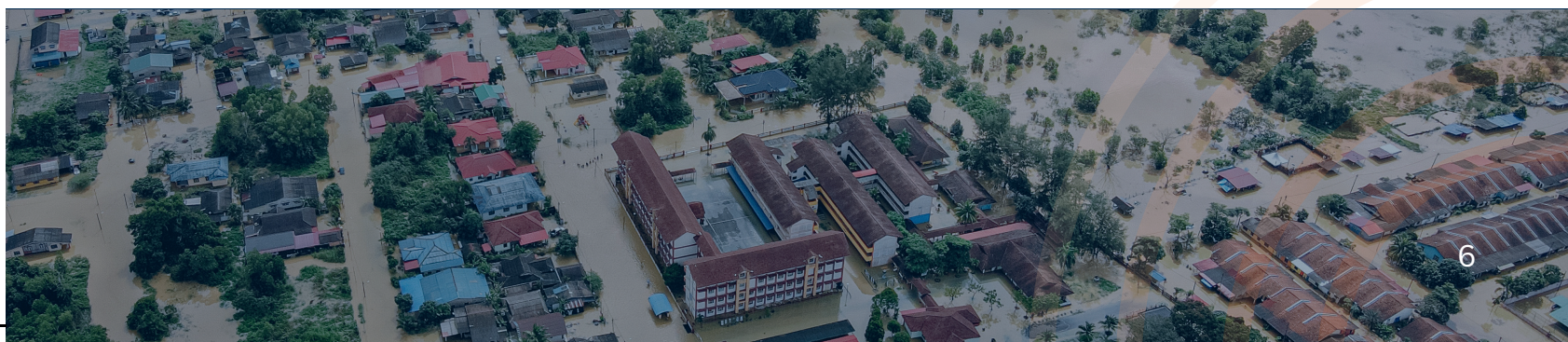
- The Food and Agricultural Defense Initiative (FADI-EDEN) team supports EDEN and the executive committee through coordination and implementation of EDEN's strategic plan

HOW INSTITUTIONS CAN SUPPORT EDEN



The specific level of participation of each Institution, Point of Contact, and Delegate is to be determined locally. However, the greatest benefit from any collaborative effort is achieved by full participation. Member institutions are encouraged to:

-  Provide travel support for at least one Point of Contact and/or delegate to EDEN's annual national meeting
-  Encourage staff to pursue partnerships with their state Emergency Management Agency, and agencies and organizations active in disaster preparedness, response, recovery and mitigation
-  Encourage all staff to be involved with state-level partnerships to participate in available training
-  Encourage educators/agents and specialists to contribute their expertise to disaster education
-  Recognize disaster education accomplishments in performance evaluation and promotion and tenure processes
-  Complete an annual written report of EDEN activities and accomplishments.



DELEGATE BENEFITS



Being part of EDEN offers numerous benefits for your professional growth and impact:

Career and Professional Development:

Access a wealth of learning opportunities, resources, and expert knowledge in disaster education.



Networking:

Connect with a nationwide community of dedicated Extension professionals working in disaster preparation, mitigation, response, and recovery.



Collaboration:

Partner on impactful projects and initiatives to enhance community resilience.



Resource Sharing

Access and contribute to a valuable collection of disaster education materials.



Visibility and Impact:

Showcase your work and expertise through presentations, publications, and network activities.



Professional Advancement:

Engagement in a national network like EDEN can strengthen your professional profile and contributions relevant to promotion and tenure.



GETTING INVOLVED



There are numerous ways to contribute to and benefit from the EDEN network. We encourage delegates to actively participate in the following:

Join a Committee:

Participate in committees focused on specific areas of interest to collaborate with colleagues and shape EDEN initiatives.

Attend the Annual Conference:

Network with colleagues, share your work, and learn about the latest advancements in disaster education.

Contribute to Response Notes:

Share valuable insights and lessons learned from disaster events you have experienced by contributing.

Submit Resources:

Contribute relevant educational materials, tools, and resources to the EDEN network, ensuring that our members have access to the best available info.

Serve as a Grant Reviewer:

Lend your expertise by serving for relevant grant opportunities, helping to advance disaster education research and programs.

Engage in State-Level Activities:

Collaborate on local and regional initiatives by engaging with state and regional EDEN groups.

Participate in Professional Development/Webinars:

Enhance your skills and knowledge in disaster education by participating in webinars and professional development opportunities.

Participate in Exercises:

Improve preparedness and response capabilities by engaging in or contributing to disaster simulation exercises.



Learn more at [ExtensionDisaster.net](https://www.extensiondisaster.net)

HOW EDEN COMMUNICATES



EDEN continually works to improve how we communicate with members, participants and stakeholders, ensuring that you stay informed and connected as we support your work in disaster education. Here's a look at our current communication channels:

Public Website: [Extensiondisaster.net](https://extensiondisaster.net) is the public hub for EDEN, offering the Resource Dashboard, directory, and other resources, providing easy access to materials and resources that reflect the depth of the network's work.

Announcement Emails: EDEN sends newsletters, funding opportunities, professional development activities, and special announcements via email. This extends to interested parties outside our member and delegate group.

Social Media: EDEN maintains a social media presence on Facebook, LinkedIn, Instagram and X. Follow us @ExtDisasterEd

EDEN Calendar: Access or subscribe at connect.extension.org/g/eden/calendar/

Listserv Email: Delegates and POCs have access to and can use the EDEN Listserv to request assistance, solicit information or resources, or otherwise engage the network in developing situations. Email eden@extension.org to learn more about listserv options.

EDEN Intranet on Connect Extension: The EDEN Subgroup on Connect Extension (connect.extension.org/g/eden) is the internal intranet for EDEN member, POC and delegate communication. Key features include:

- Organized Discussions
- Customizable Notifications
- Secure Resource Sharing
- Centralized Knowledge Management

Contact EDEN
eden@extension.org

CHECKLIST FOR NEW DELEGATES



To make the most of your EDEN experience, we encourage you to take the following initial steps:



Populate your Delegate Profile

Visit extensiondisaster.net/delegate-portal and choose “Become a Delegate”



Join a Committee

Actively participate in a committee that aligns with your interests and expertise. Contact the committee chair to learn more: extensiondisaster.net/committee



Subscribe to the EDEN calendar

Access or subscribe at connect.extension.org/g/eden/calendar



Whitelist the EDEN email list

Ensure that emails from the EDEN network are not filtered into your spam or junk folder by adding eden@extension.org to your email client address book.



Join the Connect Extension intranet group

This online platform serves as our primary communication and collaboration hub. Join at connect.extension.org/g/eden



Follow EDEN on social media:

Stay updated on the latest news, events, and resources. Follow us on Facebook, Instagram, LinkedIn and X: [@ExtDisasterEd](https://twitter.com/ExtDisasterEd)



Submit resources to the dashboard

Contribute relevant educational materials, tools, and resources to the EDEN network, ensuring that our members have access to the best available info. Submit at extensiondisaster.net/eden-hazard-resource-dashboard



Questions? Visit ExtensionDisaster.net or email eden@extension.org

CONTACT

2025



Officer Team

- **Chair:** Angie Lindsey | University of Florida | ablindsey@ufl.edu
- **Chair-Elect:** Monty Dozier | Texas A&M University | monty.dozier@ag.tamu.edu
- **Secretary:** Faye Griffiths-Smith | University of Connecticut | faye.griffiths-smith@uconn.edu
- **Immediate Past Chair:** Tom Ball | Mississippi State University | tball@ext.msstate.edu

Committee Chairs

- **Agriculture:** Samantha Gehrett | Penn State | smr5319@psu.edu
- **Community & Economic Development:** Russell Medley | University of Illinois | rmedley@illinois.edu
- **Exercise and Training:** Greg Martin | Penn State | gpm10@psu.edu
- **Family & Consumer Sciences:** Susan Moore | University of Georgia | susanm@uga.edu
- **4-H Youth Development:** Michelle Krehbiel | University of Nebraska-Lincoln | mkrehbiel2@unl.edu
- **Marketing & Membership:** Soni Cochran | University of Nebraska-Lincoln | scochran@unl.edu
- **Natural Resources:** Mike Gaffney | Washington State | mjgaffney@wsu.edu
- **Professional Development:** Conne Burnham | University of Missouri | burnhamc@missouri.edu

Advisory Boards and Liaisons

- **1890 Advisory Representative:** Noel Estwick | Prairie View A&M University | nmestwick@pvamu.edu
- **1994 Advisory Representative:** Vicki Hebb | American Indian Higher Ed Consortium | vhebb@aihec.org
- **NOAA Sea Grant Liaison:** Bill Hubbard | University of Maryland Sea Grant | hubbard@umd.edu
- **ECOP Liaison:**
- **USDA-NIFA National Liaison:** Ashley Mueller | USDA NIFA | ashley.mueller@usda.gov

Project Support (FADI-EDEN)

- **Project Director:** Ashley Griffin | Extension Foundation | agriffin@extension.org
- **Project Manager:** Fred Schlutt | Extension Foundation | fredschlutt@extension.org
- **Assistant Project Manager:** Regan Emmons | Extension Foundation | reganemmons@extension.org
- **Comms & Outreach Coordinator:** Ruth Inman | Extension Foundation | ruthinman@extension.org



eden@extension.org



ExtensionDisaster.net



[@ExtDisasterEd](https://www.instagram.com/ExtDisasterEd)



extensiondisaster.net

